

**Maryland Thermoform Corporation
Capabilities:**

- Vacuum and Pressure Form sheet thickness up to .375" (9.53mm)
- Sheet sizes up to 60" x 96" (1524mm x 2438mm)

Secondary Operations:

- Close tolerance 5-Axis CNC Router
- Trimming
- Drilling
- Sawing

Assembly:

- Bonding
- Fastening
- Heat Seal
- Sonic Weld
- Coatings

Common Materials:

Kydex 100, 550 and 510 - Parts requiring structural and electrical transparency in an antennas operating frequency band.

Kydex FST to Kydex T - Interior aircraft parts and components that satisfy FAA fire retardancy requirements (various colors).

ABS - Parts requiring high impact resistance. This material is paintable.

ABS/PVC - Flame retardant, UL rated, utilized in housings and more.

PPS - High heat, light weight, chemical and impact resistant grades.

PEEK - High temperature engineering thermoplastic. An excellent material for applications where thermal, chemical, and combustion properties are critical to performance.

Many other materials available.

Manufacturing:

336413 - Aircraft Parts and Auxiliary Equipment Manufacturing. Control Panels, housings, thin-wall ducting, brackets, seat components and more.

336999 - All other transportation equipment manufacturing. Unmanned aircraft parts and components such as Wing Covers and Fairings.

326199 - All other plastic products. Randsome Covers, Handling Trays, Packaging for the Defense, Electronic, Medical, Food and more.

Maryland Thermoform Corporation (MTC) is a complete source of plastic components, products and packaging in a wide range of core markets. MTC has been manufacturing high quality custom thermoformed products for more than 30 years and combines plastics experience with the latest computer software and technology to provide innovative and economical solutions to your most demanding projects.

In addition to superior plastic product manufacturing, we are problem solving specialists and can turn ideas into reality. From product design to "turn key" product and packaging solutions Maryland Thermoform is your "one stop" plastics source.



2717 Wilmarco Ave., Baltimore, Maryland 21223
Phone 410-947-5063 • Fax 410-947-5095
mdthermo.com
E-mail tsagastume@mdthermo.com
**Public domain images includes*



AUVSI

Unmanned Vehicle Systems

North America 2011



Visit Us
at Booth
2802

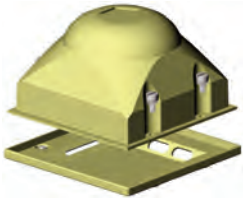
August 16-19, 2011

Washington Convention Center
Washington, D.C., U.S.A.

mdthermo.com
Phone 410-947-5063 • Fax 410-947-5095
2717 Wilmarco Avenue
Baltimore, Maryland 21223

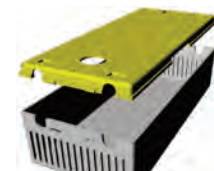
RADOMES

Maryland Thermoform Corporation (MTC) manufactures custom Radomes (EMI/RFI coated or uncoated) for the UAV, Electronic Scanning, Airborne and Ground industries out of materials that are both structurally and electronically transparent to the antenna's operating frequency bands.



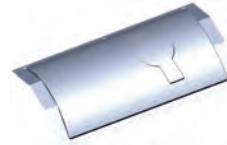
HOUSINGS & ENCLOSURES

We also manufacture all types of custom housings and enclosures for the Medical, Electronics, Defense and Commercial (Ground and Aerospace) industries utilizing materials that range from General Purpose ABS to PEEK.



COMPONENTS & ASSEMBLIES FOR UNMANNED VEHICLES

Maryland Thermoform routinely supplies components and sub-assemblies for the small/micro fixed wind and vertical takeoff markets. These are custom built to the customer's specific requirements in various high performance materials such as Glass-filled and Carbon-filled PPS. Some of the characteristics of these materials include high heat and chemical resistance, UV stabilization and lighter weight.



Manufactured components include:

- Fairings
- Engine Covers
- Pod Covers
- Ducked Fan Housings
- and more



mdthermo.com
Phone 410-947-5063 • Fax 410-947-5095
2717 Wilmarco Avenue
Baltimore, Maryland 21223



INTERIOR AIRCRAFT APPLICATIONS

MTC vacuum and pressure forms materials in grades that meet aircraft interior requirements such as chemical and impact resistance, heat deflection, fire retardancy (FAR 25853(a) & FAR 25.853(d)) smoke and toxicity (ABD0031 D6-51377), vertical burn testing and more. Our two and three dimensional aircraft components include:

- Thin wall ducting
- Brackets
- Seat components
- Instrument panels
- Side wall panels
- Tray tables
- Window reveals



Maximum component size is 4 ft. (1.219mm) x 6.5 ft. (1.981 mm) without equipment modifications.

STATIC DISPARATIVE PACKAGING

We are a high quality manufacturer of custom thermoformed static disparative packaging products to satisfy your most demanding thermoforming needs.

- 2 pc. Tray & Lid
- Blisters
- Clamshells
- Tri-Folds
- Packaging Inserts
- Shipping Trays

